



**LEVEL CROSSINGS  
EDITION**

**Kat Theophanous MP**  
*YOUR STATE MEMBER FOR NORTHCOTE*

# NORTHSIDER NEWS



## New Open Space for our Suburbs!

Works are well and truly underway to elevate the Mernda rail line and remove four dangerous level crossings at Oakover Road, Bell Street, Cramer Street and Murray Road in Preston!

This incredible project will make our roads safer, reduce congestion, improve safety for pedestrians and cyclists and modernise our local rail network.

But this is about more than just removing boom gates. The elevated rail will also create three MCGs worth of new open space!

There's something for everyone, from playgrounds to fitness zones to a BBQ area and a yarning circle - as well as an incredible new outdoor amphitheatre at Bell Station.

Locals said they wanted places to relax, play, exercise and connect with friends. More native plants, better accessibility and improved safety were also important. Take a look at some of the indicative designs that locals helped to create.

**Kat Theophanous MP**  
*YOUR STATE MEMBER FOR NORTHCOTE*





# LEVEL CROSSING REMOVAL UPDATE

## What's happening?

The Preston level crossing removal is currently undertaking major construction.

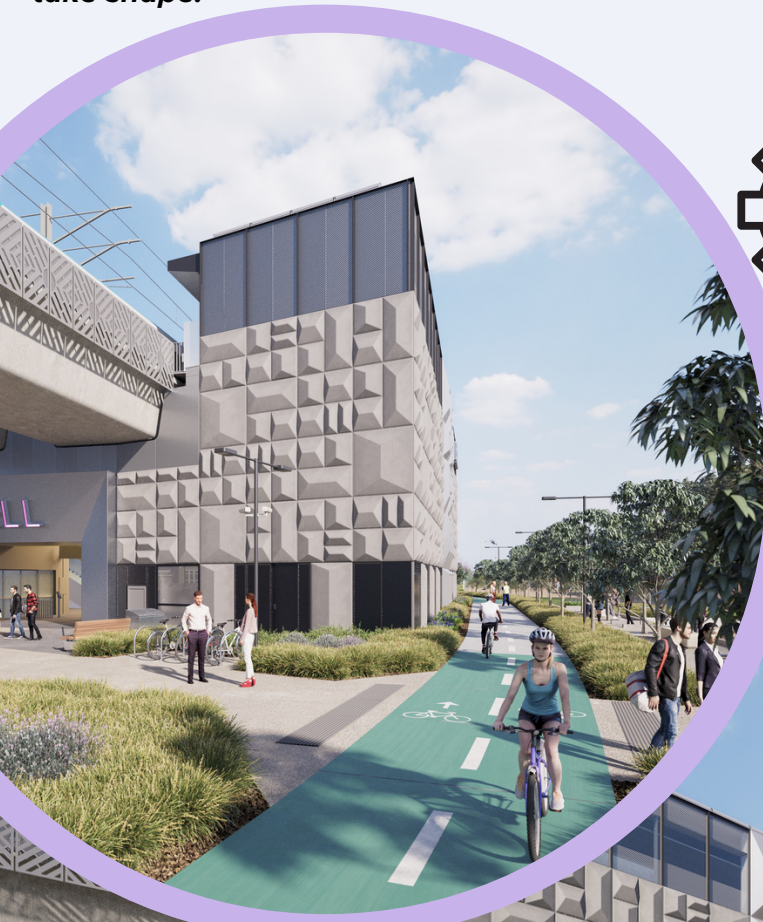
We are raising the rail line between Oakover Road and Murray Road, building two new stations at Bell and Preston, and opening up new shared spaces for locals.

You'll see foundation works and the installation of the elevated rail bridge, as well as the new stations begin to take shape.



## DELIVERING

- ✓ MODERN, SAFE AND ACCESSIBLE STATIONS
- ✓ 3 MCGS OF NEW OPEN SPACE
- ✓ NEW WALKING AND CYCLING PATHS
- ✓ 2 NEW PLAYGROUNDS
- ✓ OUTDOOR FITNESS ZONE
- ✓ YARNING CIRCLE
- ✓ BBQ AREA AND CASUAL SEATING
- ✓ BOOM GATES GONE
- ✓ OVER 700 TREES AND AROUND 150,000 PLANTS & GRASSES
- ✓ A HUGE GRASSY AMPHITHEATRE



Artists impression - Bell Station, Outdoor Amphitheatre, Shared Pathway



# SAFER, FASTER JOURNEYS & NEW OPEN SPACES

## PROJECT TIMELINE

2017  
2018

Level crossing  
removals announced!



2019

Community  
engagement  
Engineering  
investigations



2020

Concept designs  
Open space consultation  
Design finalised  
Early works

2021

Major construction  
gets underway



2022

Level crossings gone  
New stations open at  
Bell & Preston



2023

Open space ready for  
locals to enjoy!



Artists impression -  
Yarning Circle (bottom) and Playspace (top) at Oakover Rd

Want to find out more?  
**SCAN HERE**  
[kattheophanous.com.au](http://kattheophanous.com.au)





# GET IN TOUCH

*The Preston level crossing removals are turning a tired and congested rail corridor into a beautiful, modern and accessible precinct for everyone to enjoy.*

*As your local MP, I've pushed for as much open space as possible, for a safe and accessible design, and for amenities that will benefit residents for years to come.*

*The brand new premium stations, shared paths connecting our suburbs, new playgrounds and other spaces are going to be a game changer for this area.*

*I've put some Fast Facts together to help with your questions on the design and construction.*

*If you want to know more, you can contact me or the LXRP project team:*

@ [contact@levelcrossings.vic.gov.au](mailto:contact@levelcrossings.vic.gov.au)

📞 1800 105 105

👤 Translation service – for languages other than English, call 9209 0147.



## FAST FACTS

### WHEN WILL THE PROJECT BE FINISHED?

Boom gates and dangerous level crossings will be removed by the end of 2022. New open spaces will be ready for locals to enjoy in 2023.

### HOW WAS THE OPEN SPACE DESIGNED?

The new open space designs were created with and for our community. This work was led by the Preston Open Space Advisory Panel made up of local community members and online community engagement which received over 700 local submissions.

### HOW WILL SAFETY BE IMPROVED?

Removing these four dangerous level crossings will mean better safety for drivers, pedestrians and cyclists. This includes additional lighting, CCTV and the separation of pedestrians, cyclists and vehicles wherever possible. Landscaping will also create a buffer between the station and our local streets.

At Bell Station, a number of design options were considered, including for entry to the car park. The final design was found to be the safest option, minimising conflict points and maximising open space.

### WILL THERE BE CAR PARKING?

82% of local train users arrive on foot, but parking will still be an important part of the new Bell Station precinct to ensure it is accessible to our community. New electronic signage on High Street will make it easy to see if the car park is full. A separate drop off zone and the removal of the rail depot will also help reduce traffic on local streets.

### CAN WE EXPECT DISRUPTIONS?

As with all major projects, there will be some disruptions. We appreciate your patience while this transformation is underway. You can sign up for project and construction updates at [levelcrossings.vic.gov.au](http://levelcrossings.vic.gov.au).



Artists impression - Preston Station, Shared pathway

📍 4/404 High Street, Northcote  
✉ PO Box 680, Northcote VIC 3070

@ [kat.theophanous@parliament.vic.gov.au](mailto:kat.theophanous@parliament.vic.gov.au)  
🌐 [www.kattheophanous.com.au](http://www.kattheophanous.com.au)

☎ (03) 9481 5777  
📱 @KatTheoMP

**Kat**  
THEOPHANOUS  
Gets things done.